

Preiskatalog / Prix courant 2010-UAG-07-01

KLEMMBÜCHSEN
SEITEN 161-164

MOYEURS AMOVIBLES
PAGES 161-164



Gültig ab 1.6.2010
(ersetzt 2006-UAG-06 vom 1.3.2006)
Preisänderungen vorbehalten!

Valable dès 1.6.2010
(remplace 2006-UAG-06 du 1.3.2006)
Changement de prix réservé!

Inhalt / Sommaire

Seiten / Pages

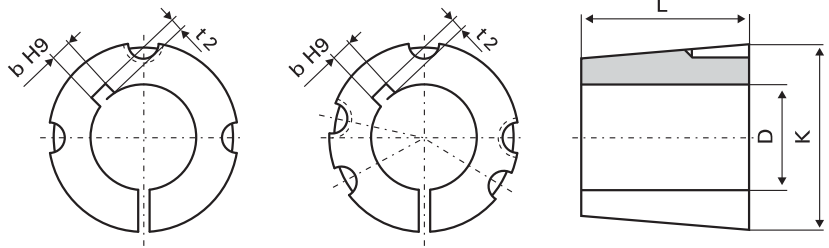
Keilriemen Courroies trapézoïdales	1-16
Zahnriemen Courroies dentées	17-89
Klemmplatten Plaques de serrage	90-92
Zahnriemenscheiben mit Vorbohrung Poulies dentées avec alésage	93-136
Zahnriemenscheiben für Klemmbüchsen Poulies dentées pour moyeu amovible	137-160
Klemmbüchsen Moyeux amovibles	161-164
Spannelemente Éléments de serrage	165-175
Spannzangen, Spannkonusse, Spannkupplungen Pincés de serrage, Cônes de serrage	176-178
Verzahnte Stangen Barreaux dentés	179-207
Flanschrings Flasques pour poulies dentées	208-223
Kupplungen Accouplements	224-233
Motoren Moteurs	234-237
Geschäftsbedingungen Conditions générales	238-241

Zahnriemenscheibentypen PolyChain® GT
Types de poulies crantées PolyChain® GT

Umschlag Einklappseite
En dernière page de la couverture pliée

Klemmbüchsen

Moyeux amovibles



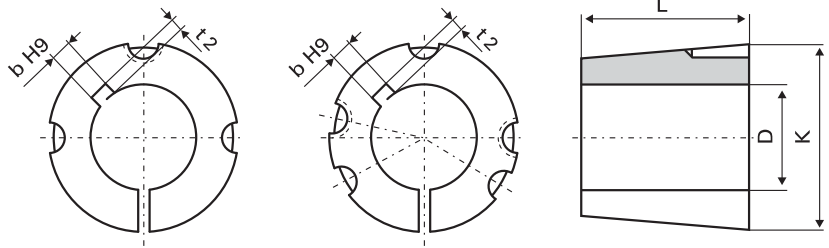
Reihe | **TB ..**
Série

Bezeichnung Désignation						Schrauben / Vis			Preis Prix	
	D	K	L	b	t2	1)	BSW	2)	3) Nm	CHF
TB 1008 ..	10	35	22.3	3	1.4	2	1/4 x 1/2	3	5.7	12.50
	11, 12	35	22.3	4	1.8	2	1/4 x 1/2	3	5.7	12.50
	14, 15, 16	35	22.3	5	2.3	2	1/4 x 1/2	3	5.7	12.50
	18, 19, 20, 22	35	22.3	6	2.8	2	1/4 x 1/2	3	5.7	12.50
	24, 25	35	22.3	8	1.3	2	1/4 x 1/2	3	5.7	12.50
TB 1108 ..	10	38	22.3	3	1.4	2	1/4 x 1/2	3	5.7	13.00
	11, 12	38	22.3	4	1.8	2	1/4 x 1/2	3	5.7	13.00
	14, 15, 16, 17	38	22.3	5	2.3	2	1/4 x 1/2	3	5.7	13.00
	18, 19, 20, 22	38	22.3	6	2.8	2	1/4 x 1/2	3	5.7	13.00
	24, 25, 26	38	22.3	8	3.3	2	1/4 x 1/2	3	5.7	13.00
	28	38	22.3	8	1.3	2	1/4 x 1/2	3	5.7	13.00
TB 1210 ..	12	47.5	25.4	4	1.8	2	3/8 x 5/8	5	20	18.00
	14, 15, 16	47.5	25.4	5	2.3	2	3/8 x 5/8	5	20	18.00
	18, 19, 20, 22	47.5	25.4	6	2.8	2	3/8 x 5/8	5	20	18.00
	24, 25, 26, 28, 30	47.5	25.4	8	3.3	2	3/8 x 5/8	5	20	18.00
	32	47.5	25.4	10	3.3	2	3/8 x 5/8	5	20	18.00
TB 1215 ..	12	47.5	38.1	4	1.8	2	3/8 x 5/8	5	20	19.40
	14, 15, 16	47.5	38.1	5	2.3	2	3/8 x 5/8	5	20	19.40
	18, 19, 20, 22	47.5	38.1	6	2.8	2	3/8 x 5/8	5	20	19.40
	24, 25, 26, 28, 30	47.5	38.1	8	3.3	2	3/8 x 5/8	5	20	19.40
	32	47.5	38.1	10	3.3	2	3/8 x 5/8	5	20	19.40
TB 1310 ..	14, 15, 16	50.5	25.4	5	2.3	2	3/8 x 5/8	5	20	19.70
	18, 19, 20, 22	50.5	25.4	6	2.8	2	3/8 x 5/8	5	20	19.70
	24, 25, 28, 30	50.5	25.4	8	3.3	2	3/8 x 5/8	5	20	19.70
	32	50.5	25.4	10	3.3	2	3/8 x 5/8	5	20	19.70
	35	50.5	25.4	10	1.3	2	3/8 x 5/8	5	20	19.70
TB 1610 ..	12	57	25.4	4	1.8	2	3/8 x 5/8	5	20	19.90
	14, 15, 16	57	25.4	5	2.3	2	3/8 x 5/8	5	20	19.90
	18, 19, 20, 22	57	25.4	6	2.8	2	3/8 x 5/8	5	20	19.90
	24, 25, 26, 28, 30	57	25.4	8	3.3	2	3/8 x 5/8	5	20	19.90
	32, 35, 38	57	25.4	10	3.3	2	3/8 x 5/8	5	20	19.90
	40, 42	57	25.4	12	3.3	2	3/8 x 5/8	5	20	19.90

- 1) Anzahl Schrauben / Nombre de vis
2) Schlüssel / Clé
3) Anzugsmoment / Couple de serrage

Klemmbüchsen

Moyeux amovibles



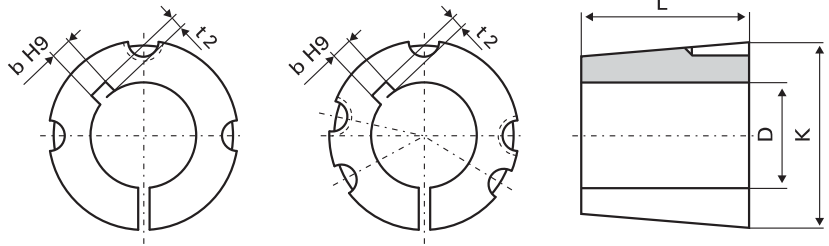
Reihe | **TB ..**
Série

Bezeichnung Désignation	Schrauben / Vis										Preis Prix CHF
	D	K	L	b	t2	1)	BSW	2)	3) Nm		
TB 1615 ..	12	57	38.1	4	1.8	2	3/8 x 5/8	5	20	22.30	
	14, 15, 16	57	38.1	5	2.3	2	3/8 x 5/8	5	20	22.30	
	18, 19, 20, 22	57	38.1	6	2.8	2	3/8 x 5/8	5	20	22.30	
	24, 25, 26, 28, 30	57	38.1	8	3.3	2	3/8 x 5/8	5	20	22.30	
	32, 35, 38	57	38.1	10	3.3	2	3/8 x 5/8	5	20	22.30	
	40	57	38.1	12	3.3	2	3/8 x 5/8	5	20	22.30	
	42	57	38.1	12	1.3	2	3/8 x 5/8	5	20	22.30	
TB 2012 ..	14, 15, 16	70	31.8	5	2.3	2	7/16 x 7/8	6	31	25.80	
	18, 19, 20, 22	70	31.8	6	2.8	2	7/16 x 7/8	6	31	25.80	
	24, 25, 26, 28, 30	70	31.8	8	3.3	2	7/16 x 7/8	6	31	25.80	
	32, 35, 38	70	31.8	10	3.3	2	7/16 x 7/8	6	31	25.80	
	40, 42	70	31.8	12	3.3	2	7/16 x 7/8	6	31	25.80	
	45, 48, 50	70	31.8	14	3.8	2	7/16 x 7/8	6	31	25.80	
TB 2517 ..	18, 19, 20, 22	85.5	44.5	6	2.8	2	1/2 x 1	6	49	38.70	
	24, 25, 26, 28, 30	85.5	44.5	8	3.3	2	1/2 x 1	6	49	38.70	
	32, 35, 38	85.5	44.5	10	3.3	2	1/2 x 1	6	49	38.70	
	40, 42	85.5	44.5	12	3.3	2	1/2 x 1	6	49	38.70	
	45, 48, 50	85.5	44.5	14	3.8	2	1/2 x 1	6	49	38.70	
	55	85.5	44.5	16	4.3	2	1/2 x 1	6	49	38.70	
	60, 65	85.5	44.5	18	4.4	2	1/2 x 1	6	49	38.70	
TB 3020 ..	25, 28, 30	108	50.8	8	3.3	2	5/8 x 1 1/4	8	92	65.00	
	32, 35, 38	108	50.8	10	3.3	2	5/8 x 1 1/4	8	92	65.00	
	40, 42	108	50.8	12	3.3	2	5/8 x 1 1/4	8	92	65.00	
	45, 48, 50	108	50.8	14	3.8	2	5/8 x 1 1/4	8	92	65.00	
	55	108	50.8	16	4.3	2	5/8 x 1 1/4	8	92	65.00	
	60, 65	108	50.8	18	4.4	2	5/8 x 1 1/4	8	92	65.00	
	70, 75	108	50.8	20	4.9	2	5/8 x 1 1/4	8	92	65.00	
TB 3030 ..	25, 28, 30	108	76.2	8	3.3	2	5/8 x 1 1/4	8	92	91.90	
	32, 35, 38	108	76.2	10	3.3	2	5/8 x 1 1/4	8	92	91.90	
	40, 42	108	76.2	12	3.3	2	5/8 x 1 1/4	8	92	91.90	
	45, 48, 50	108	76.2	14	3.8	2	5/8 x 1 1/4	8	92	91.90	
	55	108	76.2	16	4.3	2	5/8 x 1 1/4	8	92	91.90	
	60, 65	108	76.2	18	4.4	2	5/8 x 1 1/4	8	92	91.90	
	70, 75	108	76.2	20	1.9	2	5/8 x 1 1/4	8	92	91.90	

- 1) Anzahl Schrauben / Nombre de vis
2) Schlüssel / Clé
3) Anzugsmoment / Couple de serrage

Klemmbüchsen

Moyeux amovibles



Reihe | **TB ..**
Série

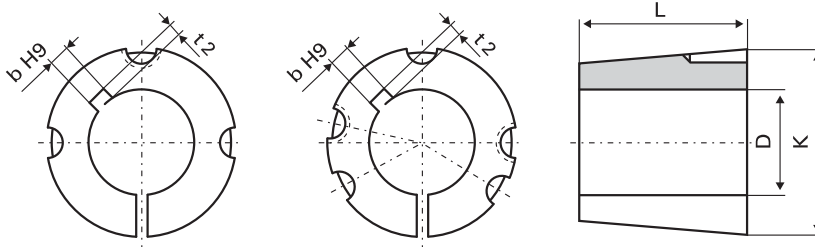
Bezeichnung Désignation	Schrauben / Vis					1)	BSW	2)	3) Nm	Preis Prix CHF
	D	K	L	b	t2					
TB 3525 ..	35, 38	127	63.5	10	3.3	3	1/2 x 1 1/2	10	115	110.00
	40, 42	127	63.5	12	3.3	3	1/2 x 1 1/2	10	115	110.00
	45, 48, 50	127	63.5	14	3.8	3	1/2 x 1 1/2	10	115	110.00
	55	127	63.5	16	4.3	3	1/2 x 1 1/2	10	115	110.00
	60, 65	127	63.5	18	4.4	3	1/2 x 1 1/2	10	115	110.00
	70, 75	127	63.5	20	4.9	3	1/2 x 1 1/2	10	115	110.00
	80, 85	127	63.5	22	5.4	3	1/2 x 1 1/2	10	115	110.00
	90	127	63.5	25	5.4	3	1/2 x 1 1/2	10	115	110.00
TB 3535 ..	40, 42	127	88.9	12	3.3	3	1/2 x 1 1/2	10	115	145.00
	45, 48, 50	127	88.9	14	3.8	3	1/2 x 1 1/2	10	115	145.00
	55	127	88.9	16	4.3	3	1/2 x 1 1/2	10	115	145.00
	60, 65	127	88.9	18	4.4	3	1/2 x 1 1/2	10	115	145.00
	70, 75	127	88.9	20	4.9	3	1/2 x 1 1/2	10	115	145.00
	80, 85	127	88.9	22	5.4	3	1/2 x 1 1/2	10	115	145.00
	90	127	88.9	25	5.4	3	1/2 x 1 1/2	10	115	145.00
	TB 4030 ..	40, 42	146	76.2	12	3.3	3	5/8 x 1 3/4	1/2	172
45, 48, 50		146	76.2	14	3.8	3	5/8 x 1 3/4	1/2	172	175.00
55		146	76.2	16	4.3	3	5/8 x 1 3/4	1/2	172	175.00
60, 65		146	76.2	18	4.4	3	5/8 x 1 3/4	1/2	172	175.00
70, 75		146	76.2	20	4.9	3	5/8 x 1 3/4	1/2	172	175.00
80, 85		146	76.2	22	5.4	3	5/8 x 1 3/4	1/2	172	175.00
90, 95		146	76.2	25	5.4	3	5/8 x 1 3/4	1/2	172	175.00
100		146	76.2	28	6.4	3	5/8 x 1 3/4	1/2	172	175.00
TB 4040 ..	40, 42	146	101.6	12	3.3	3	5/8 x 1 3/4	1/2	172	198.00
	45, 48, 50	146	101.6	14	3.8	3	5/8 x 1 3/4	1/2	172	198.00
	55	146	101.6	16	4.3	3	5/8 x 1 3/4	1/2	172	198.00
	60, 65	146	101.6	18	4.4	3	5/8 x 1 3/4	1/2	172	198.00
	70, 75	146	101.6	20	4.9	3	5/8 x 1 3/4	1/2	172	198.00
	80, 85	146	101.6	22	5.4	3	5/8 x 1 3/4	1/2	172	198.00
	90, 95	146	101.6	25	5.4	3	5/8 x 1 3/4	1/2	172	198.00
	100	146	101.6	28	6.4	3	5/8 x 1 3/4	1/2	172	198.00

- 1) Anzahl Schrauben / Nombre de vis
2) Schlüssel / Clé
3) Anzugsmoment / Couple de serrage

* auf Anfrage
sur demande

Klemmbüchsen

Moyeux amovibles



Reihe | **TB ..**
Série

Bezeichnung Désignation	Schrauben / Vis									Preis Prix CHF
	D	K	L	b	t2	1)	BSW	2)	3) Nm	
TB 4535 ..	55	162	88.9	16	4.3	3	3/4 x 2	9/16	195	280.00
	60, 65	162	88.9	18	4.4	3	3/4 x 2	9/16	195	280.00
	70, 75	162	88.9	20	4.9	3	3/4 x 2	9/16	195	280.00
	80, 85	162	88.9	22	5.4	3	3/4 x 2	9/16	195	280.00
	90, 95	162	88.9	25	5.4	3	3/4 x 2	9/16	195	280.00
	100, 105, 110	162	88.9	28	6.4	3	3/4 x 2	9/16	195	280.00
TB 5040 ..	70, 75	177.5	101.6	20	4.9	3	7/8 x 2 1/4	9/16	275	383.00
	80, 85	177.5	101.6	22	5.4	3	7/8 x 2 1/4	9/16	275	383.00
	90, 95	177.5	101.6	25	5.4	3	7/8 x 2 1/4	9/16	275	383.00
	100, 105, 110	177.5	101.6	28	6.4	3	7/8 x 2 1/4	9/16	275	383.00
	120	177.5	101.6	32	7.4	3	7/8 x 2 1/4	9/16	275	383.00

- 1) Anzahl Schrauben / Nombre de vis
- 2) Schlüssel / Clé
- 3) Anzugsmoment / Couple de serrage

Bestellbeispiel: **TB 4535 55** = Reihe • Type • D
Code de commande: **TB 4535 55** = Série • Type • D